



Installing MacBook Pro 15" Retina Display Mid 2012 Upper Case Assembly

Written By: Jake Devincenzi



TOOLS:

- [MacBook Pro and Air 5-Point Pentalobe Screwdriver \(1\)](#)
- [Plastic Opening Tools \(1\)](#)
- [Spudger \(1\)](#)
- [T5 Torx Screwdriver \(1\)](#)



PARTS:

- [MacBook Pro 15" Retina Upper Case Assembly \(1\)](#)

SUMMARY

The battery, keyboard, trackpad, and upper case are all stuck together. If you break one of these components, you will need to replace the entire assembly. Follow this guide to do so.

Step 1 — Lower Case



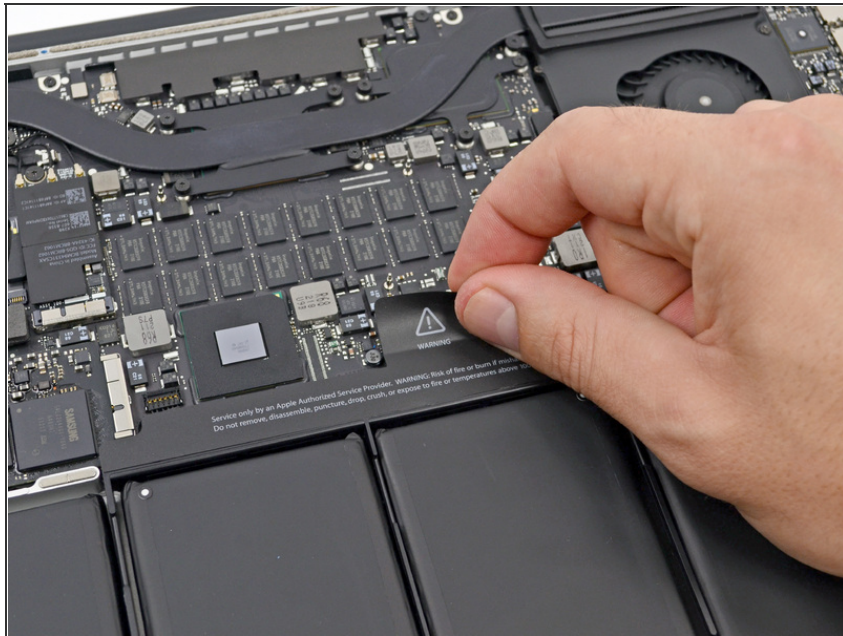
- Remove the following pentalobe screws securing the lower case to the MacBook Pro with Retina display.
 - Eight 3.0 mm
 - Two 2.3 mm

Step 2



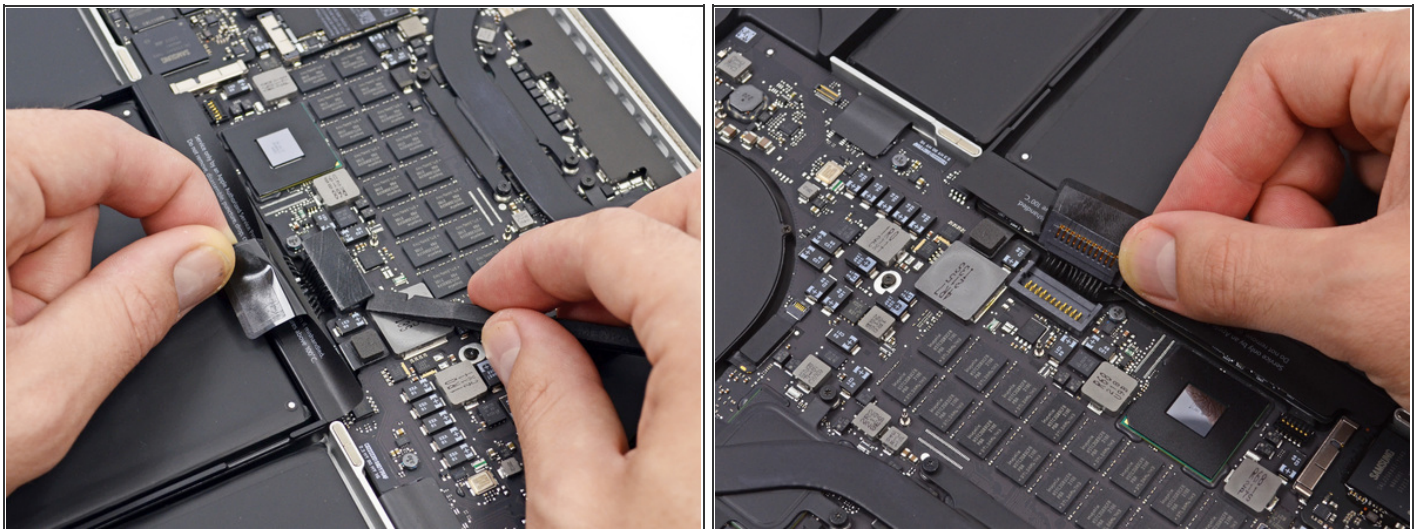
- Lifting from the edge nearest the clutch cover, lift the lower case off the MacBook Pro.
- Set the lower case aside.

Step 3 — Battery Connector



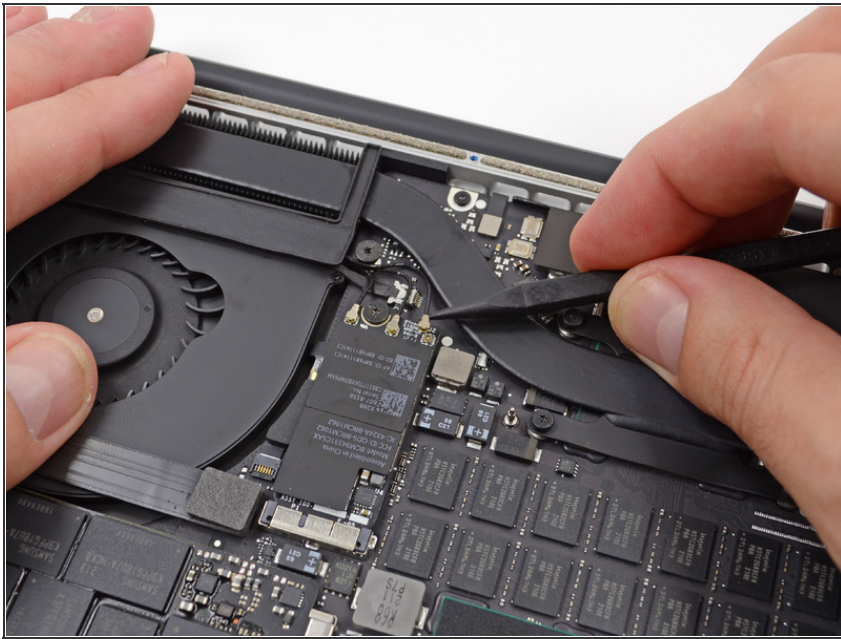
- Peel back the warning label covering the battery connector.

Step 4



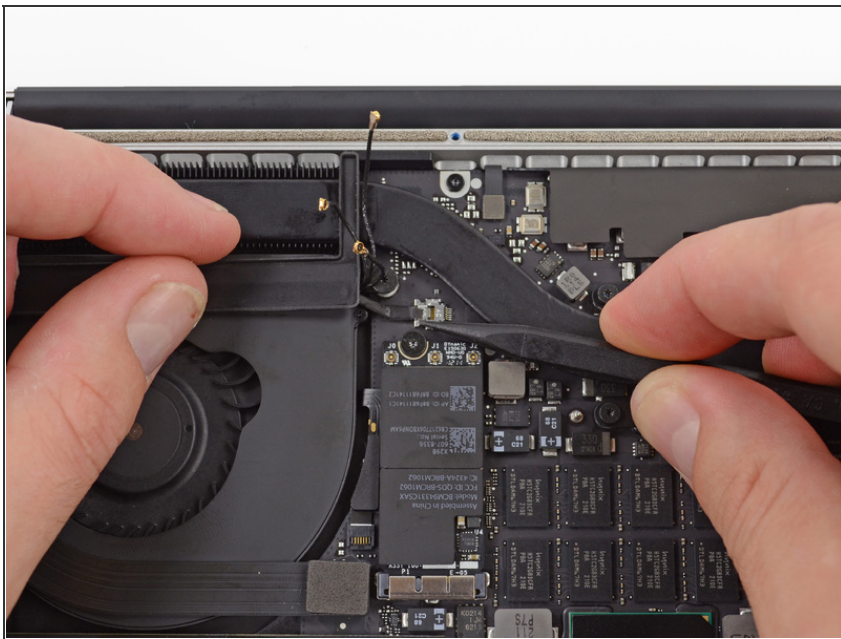
- Using the flat end of a spudger, gently pry the battery connector straight up out of its socket on the logic board.
- Bend the battery cables back and out of the way, ensuring that the battery connector doesn't accidentally make contact with the logic board.


Step 5 — AirPort/Camera Cable



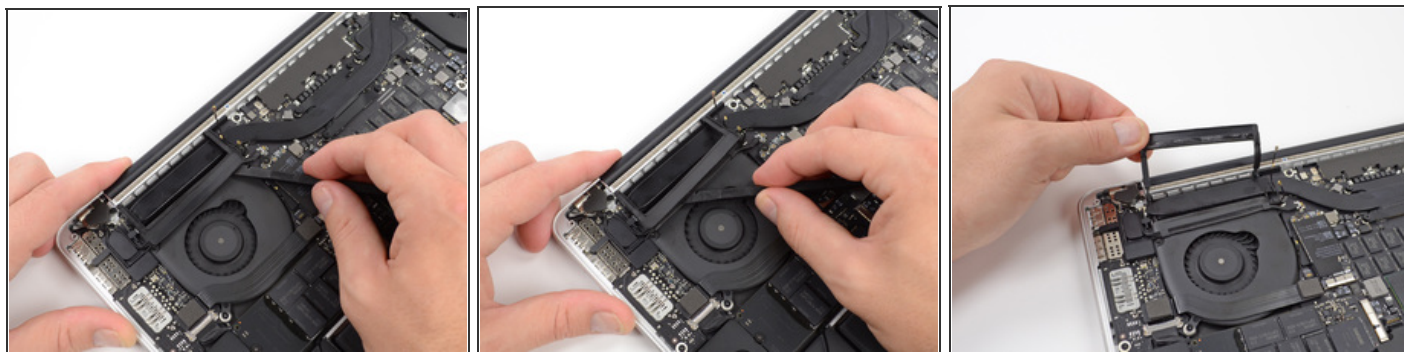
- Use the tip of a spudger to pry the three AirPort antenna cables straight up off of their sockets on the AirPort board.

Step 6



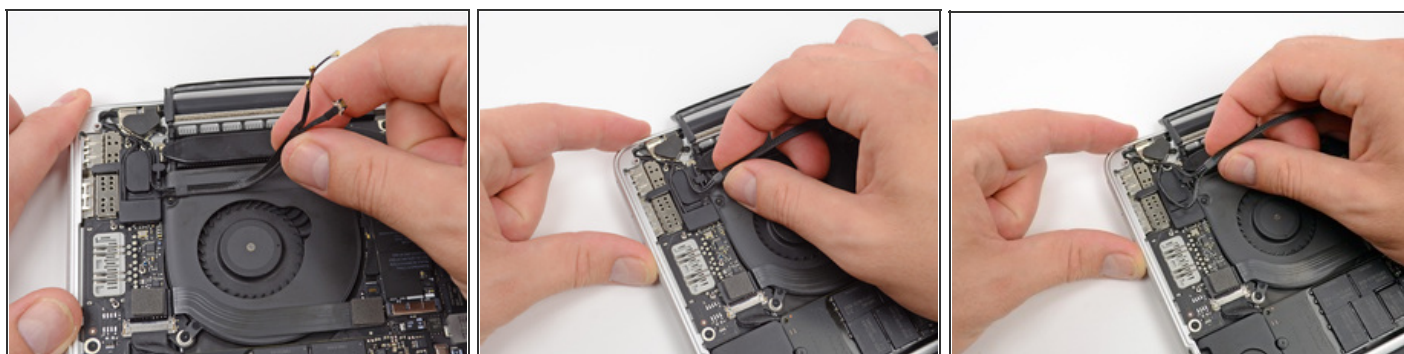
- Use the tip of a spudger to push the camera cable connector out of its socket on the logic board.
- Be sure to push parallel to the board, pushing first on one side, then the other to "walk" the connector out of its socket. 

Step 7



- Insert the flat end of a spudger underneath the rubber heat sink cover on the right fan.
- Slide the spudger underneath the length of the cover, releasing the adhesive.
- Lift the cover and flip it back so that you can access the cables underneath.

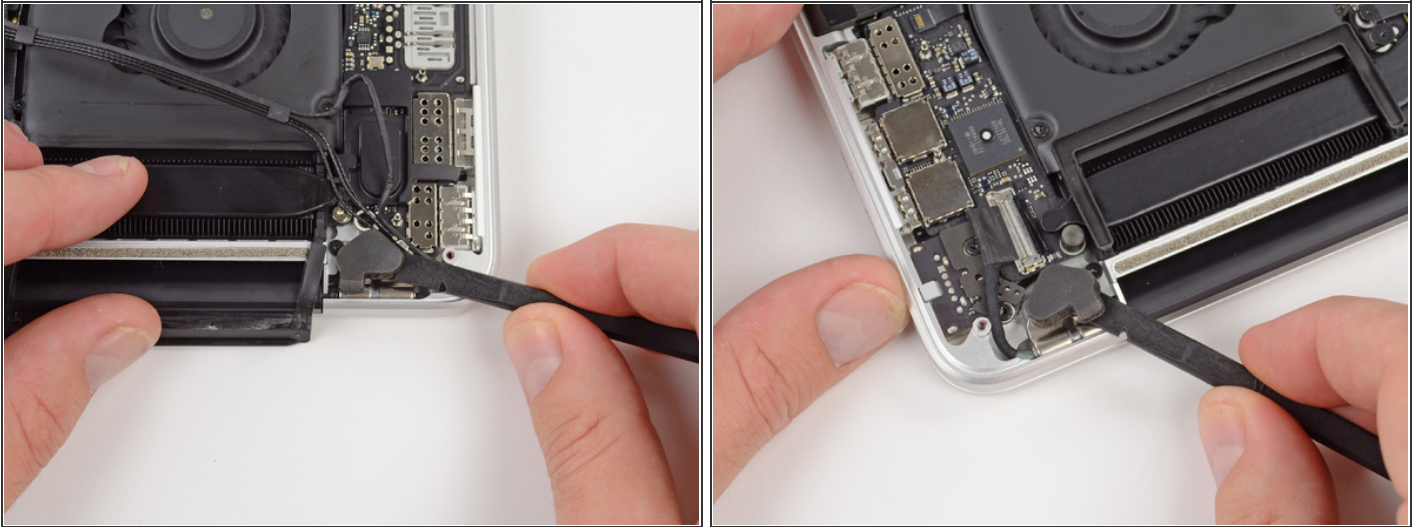
Step 8



- Use your fingers to pull the AirPort/Camera cables up off the fan.
 - The cables are adhered to the fan, so peel them up carefully to prevent ripping any.
- Carefully de-route the cables from the plastic cable guide.

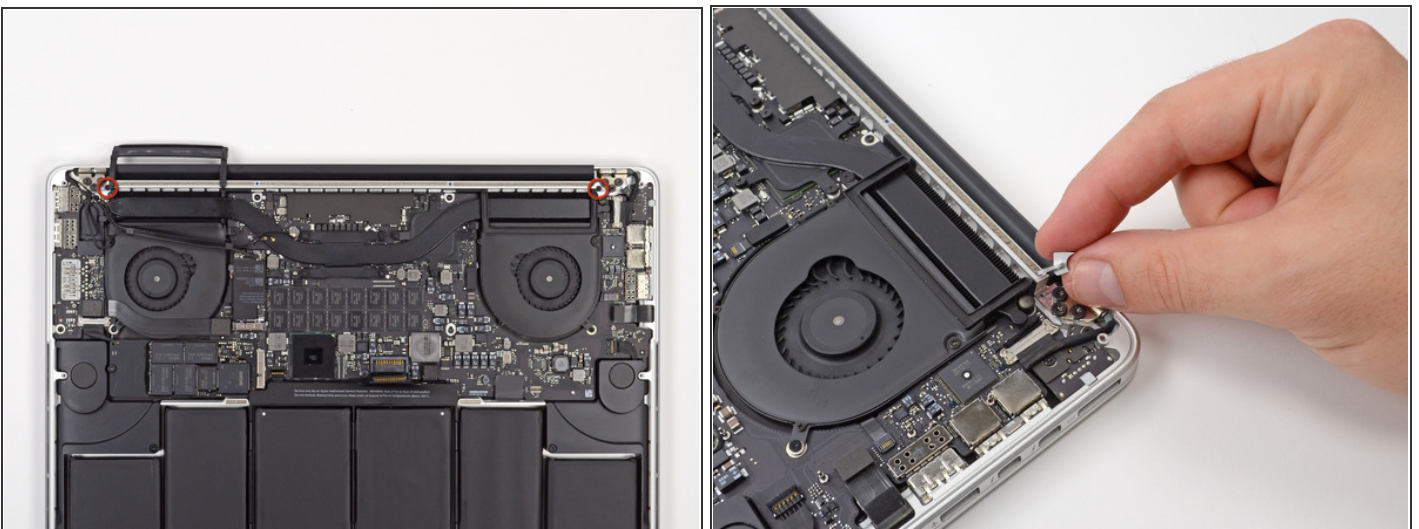


Step 9 — Rubber Hinge Covers



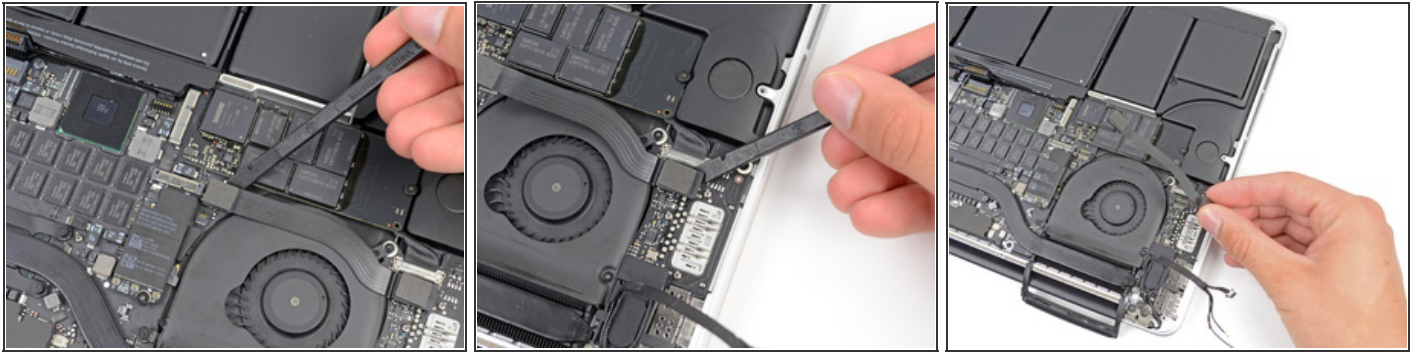
- Use the flat end of a spudger to pry the rubber hinge covers up off the left and right hinges.

Step 10 — Display Assembly Screws



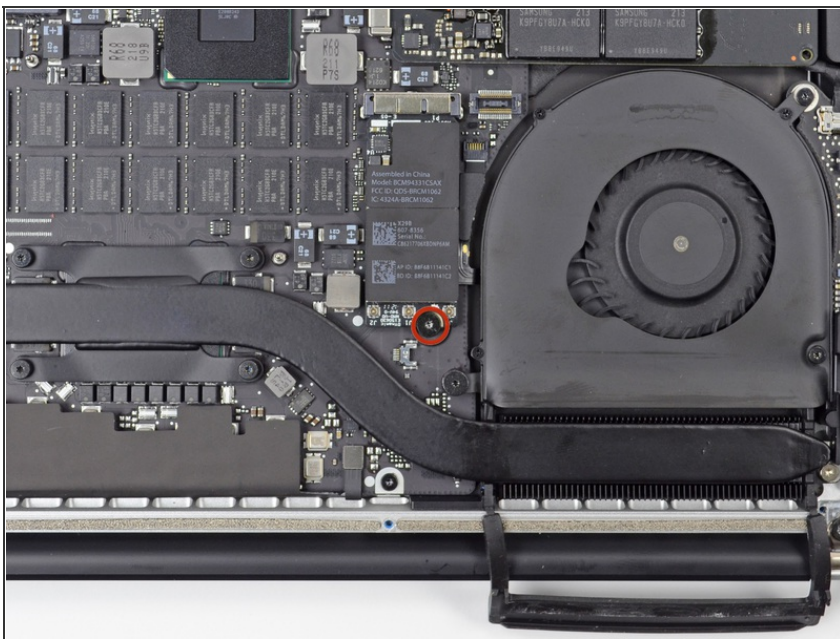
- Remove the two 3.1 mm T5 Torx screws securing the aluminum hinge covers to the upper case.
- Remove the two aluminum hinge brackets from the MacBook Pro.

Step 11 — I/O Board Cable



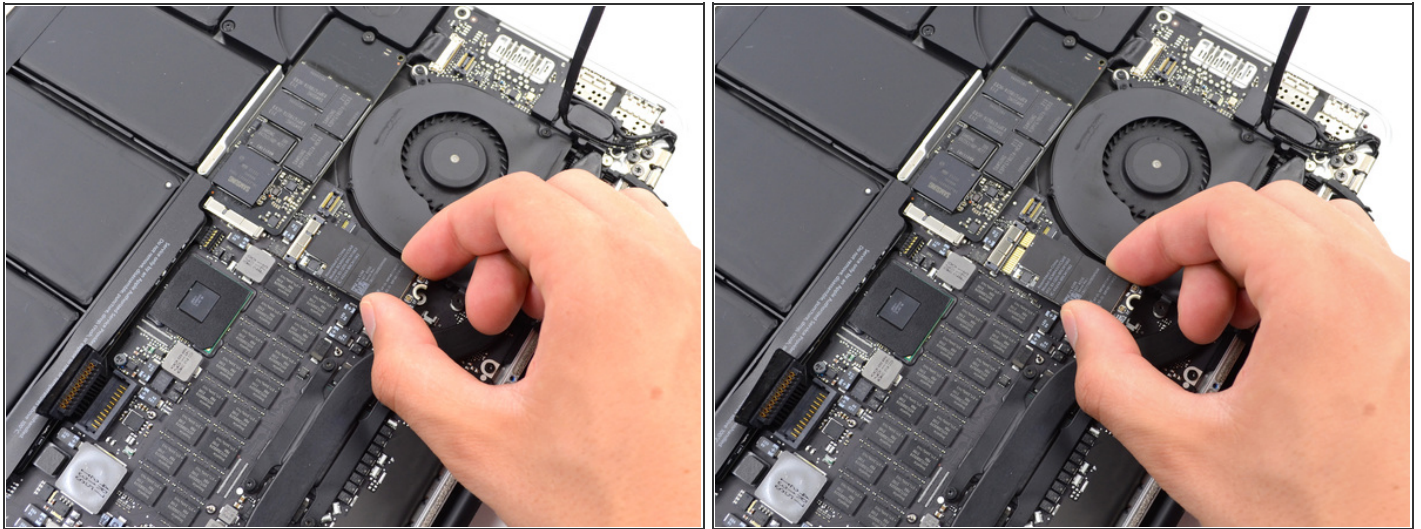
- Using the flat end of a spudger, pry the I/O Board connector straight up out of its socket on the logic board.
- In a similar fashion, remove the I/O Board connector from its socket on the I/O Board.
- Remove the I/O Board cable from the MacBook Pro.

Step 12 — Right Fan



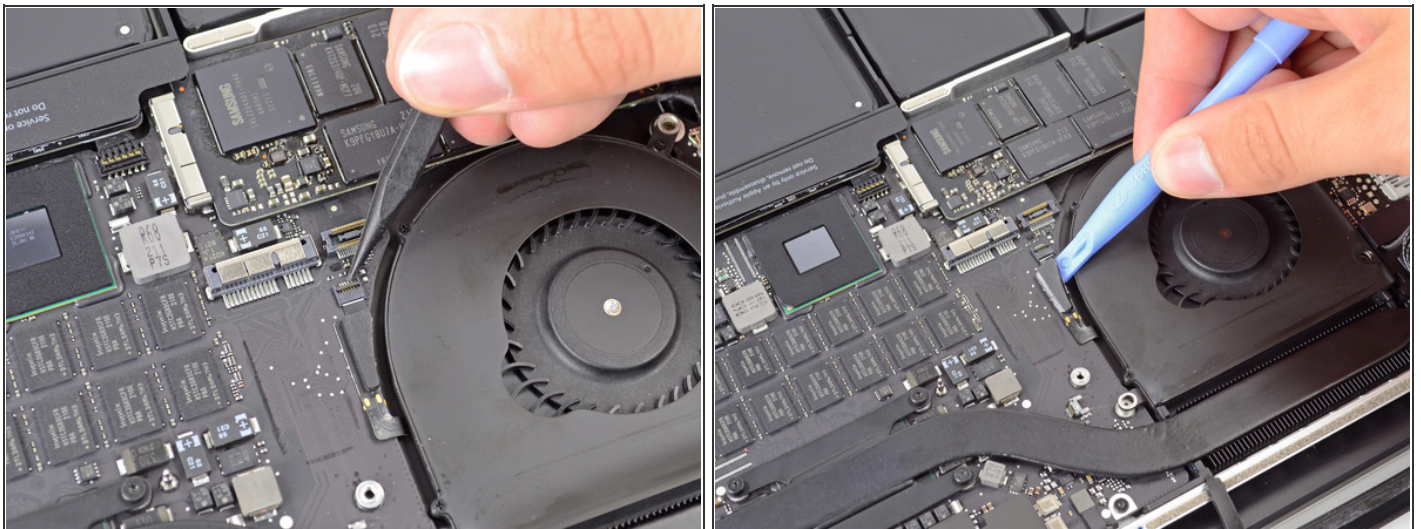
- Remove the single 2.9 mm T5 Torx screw securing the AirPort card to the logic board.

Step 13



- Grasp the side of the AirPort card and pull parallel to the logic board, removing the AirPort card from the MacBook Pro.

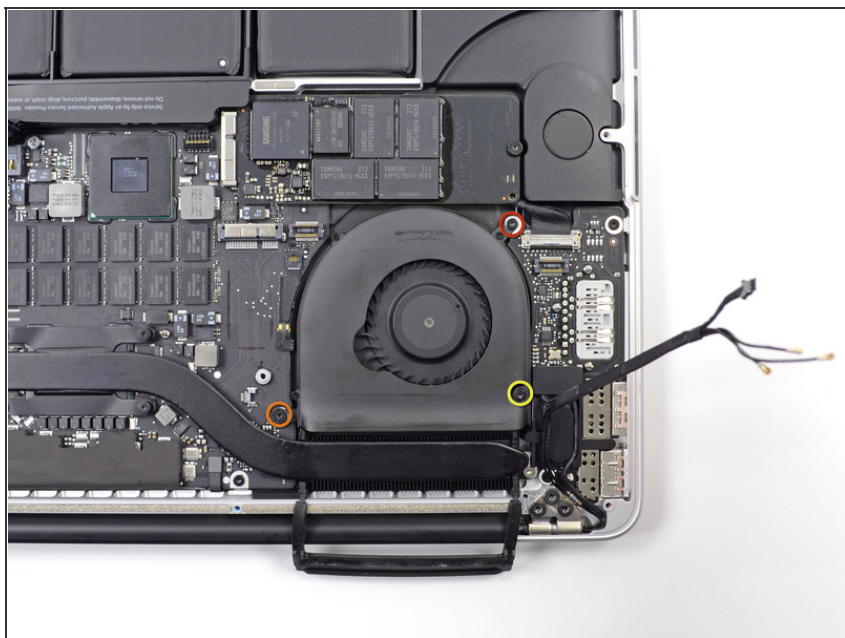
Step 14



- Use the tip of a spudger to flip up the retaining flap on the right fan ribbon cable ZIF socket.
- Be sure you are prying up on the hinged retaining flap, **not** the socket itself.
- Gently pry up the right fan ribbon cable from the logic board.

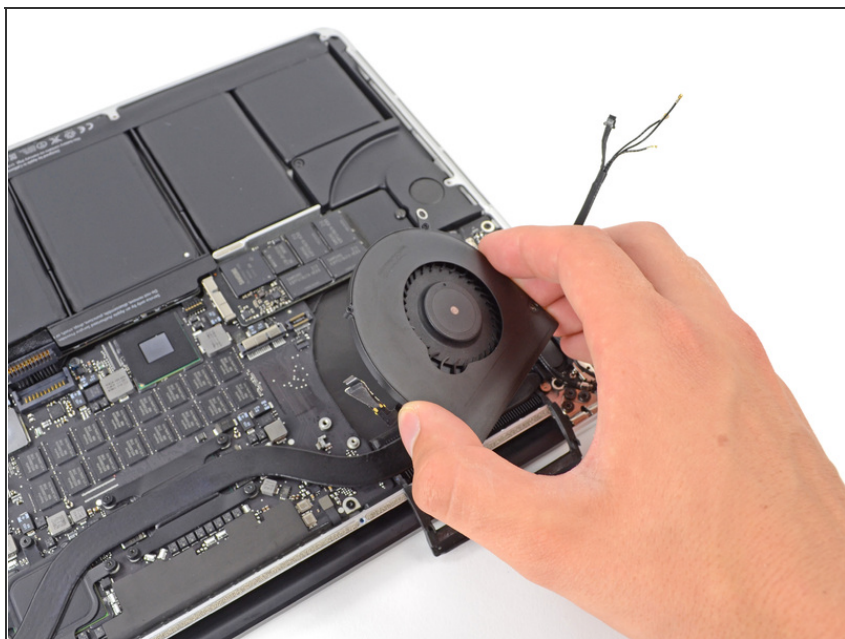


Step 15



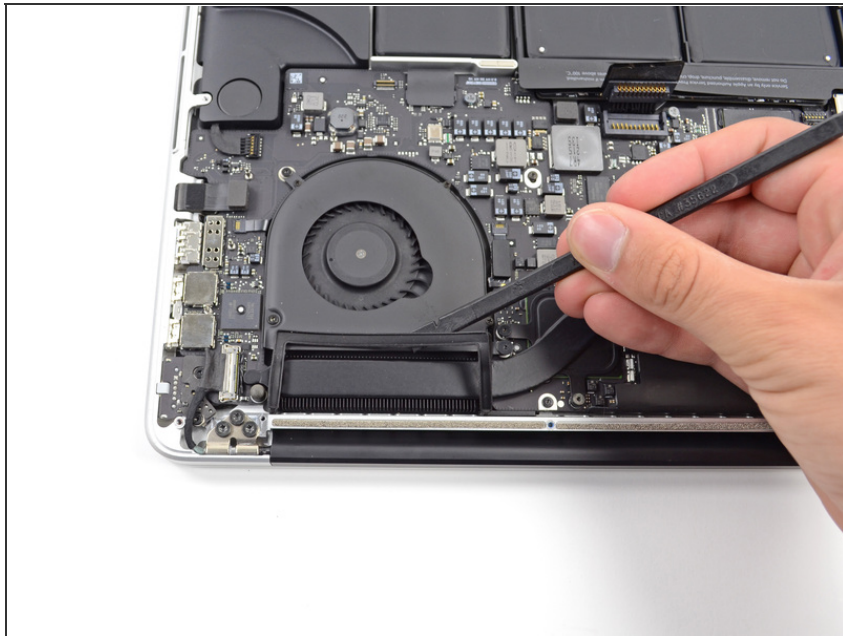
- Remove the following three screws securing the right fan to the logic board:
 - One 4.4 mm T5 Torx screw
 - One 3.9 mm T5 Wide Head Torx screw
 - One 5.0 mm T5 Torx screw

Step 16



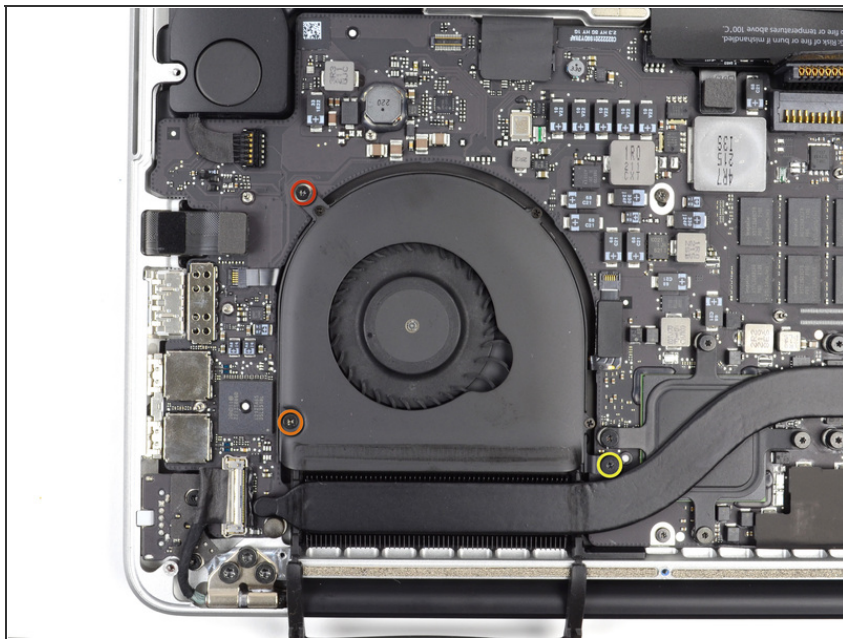
- Lift and remove the right fan out from the MacBook Pro.

Step 17 — Left Fan



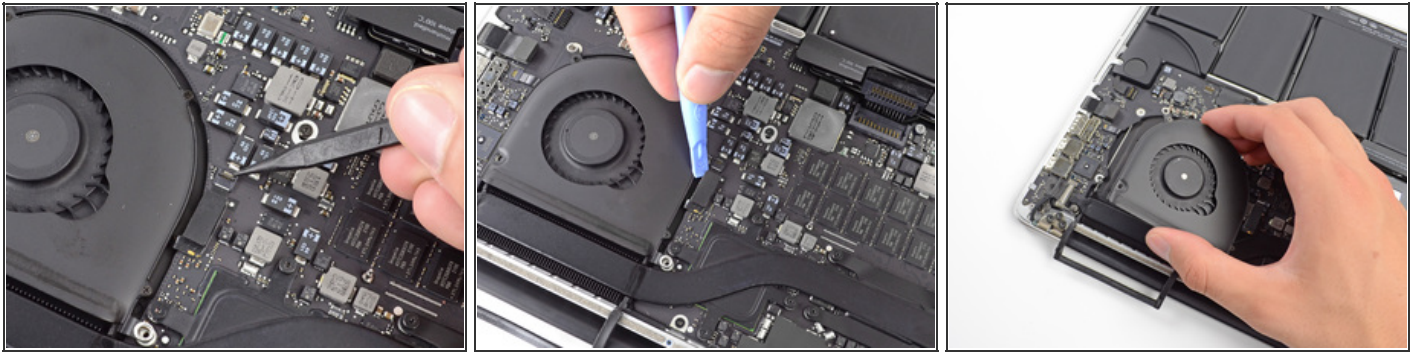
- Use the flat end of a spudger to lift the rubber heat sink cover up off the left fan.



Step 18



- Remove the following three screws securing the left fan to the logic board:
 - One 4.4 mm T5 Torx screw
 - One 5.0 mm T5 Torx screw
 - One 3.9 mm T5 Wide Head Torx screw

Step 19



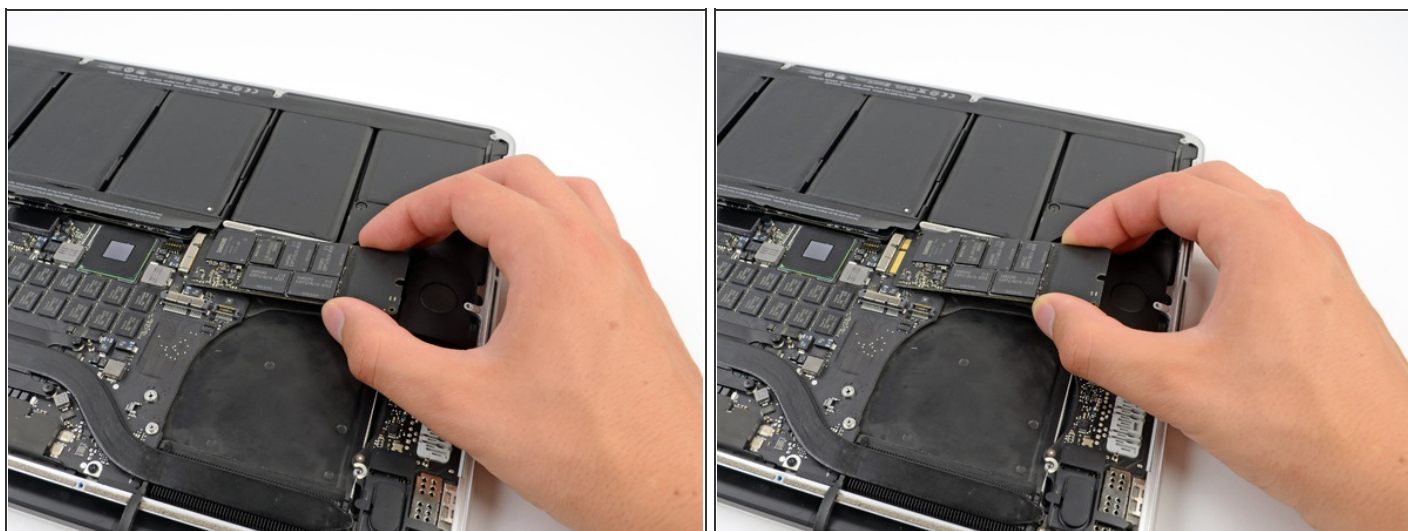
- Use the tip of a spudger to flip up the retaining flap on the left fan ribbon cable ZIF socket.
- Be sure you are prying up on the hinged retaining flap, **not** the socket itself. 
- Starting at the top of the cable, slide a plastic opening tool under the left fan cable to free it from the logic board.
 - Use caution when freeing the cable, as it is strongly adhered to the logic board. 
- Lift the left fan out of the device.

Step 20 — SSD



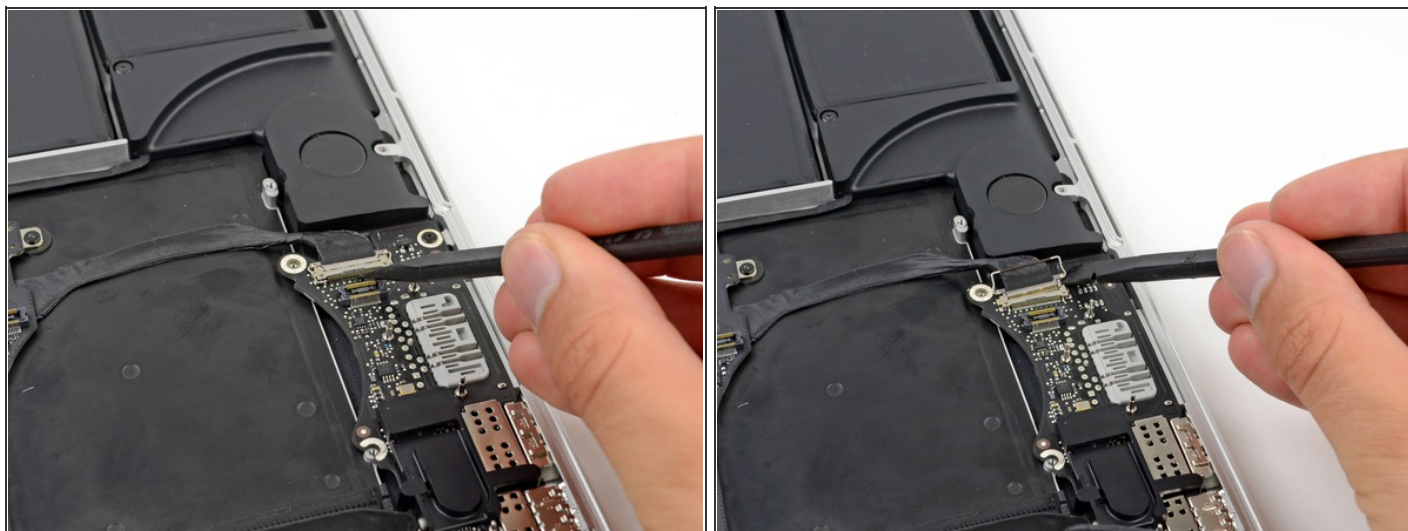
- Remove the single 3.1 mm T5 Torx screw securing the SSD to the logic board.

Step 21



- Slightly lift the rightmost side of the SSD and firmly slide it straight away out of its socket on the logic board.

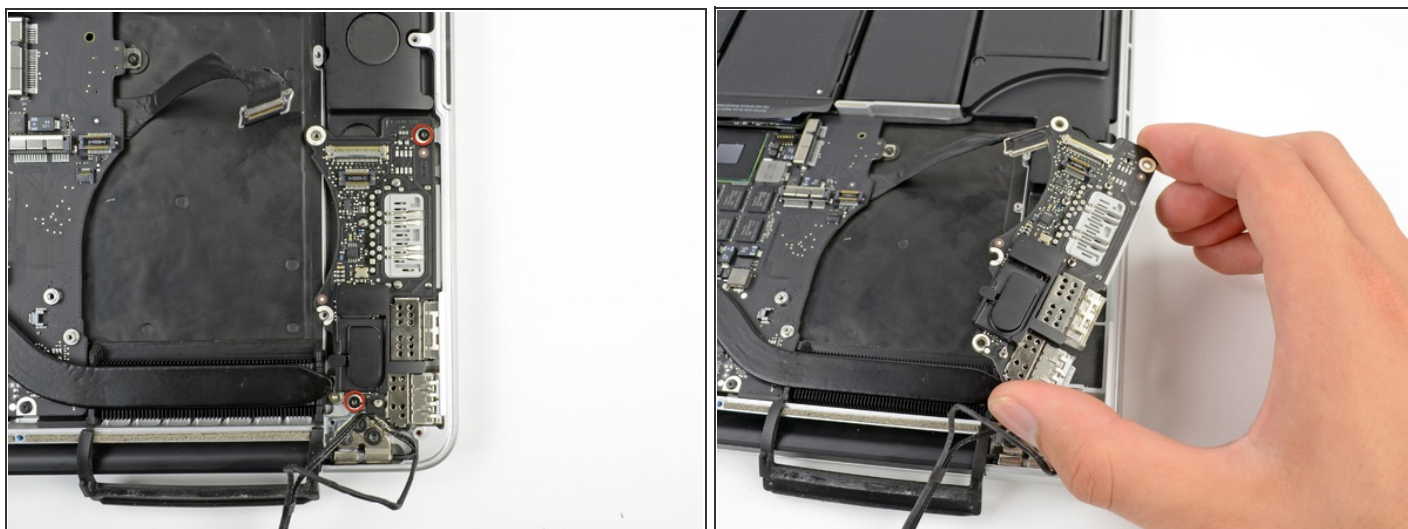
Step 22 — I/O Board



- Use the tip of a spudger to flip up the I/O board data cable lock and rotate it toward the battery side of the computer.
- Use the flat end of a spudger to slide the I/O board data cable straight out of its socket on the logic board.
- Do not lift up on the I/O board data cable, as its socket is very fragile. Pull the cable perpendicular to the face of the logic board.



Step 23



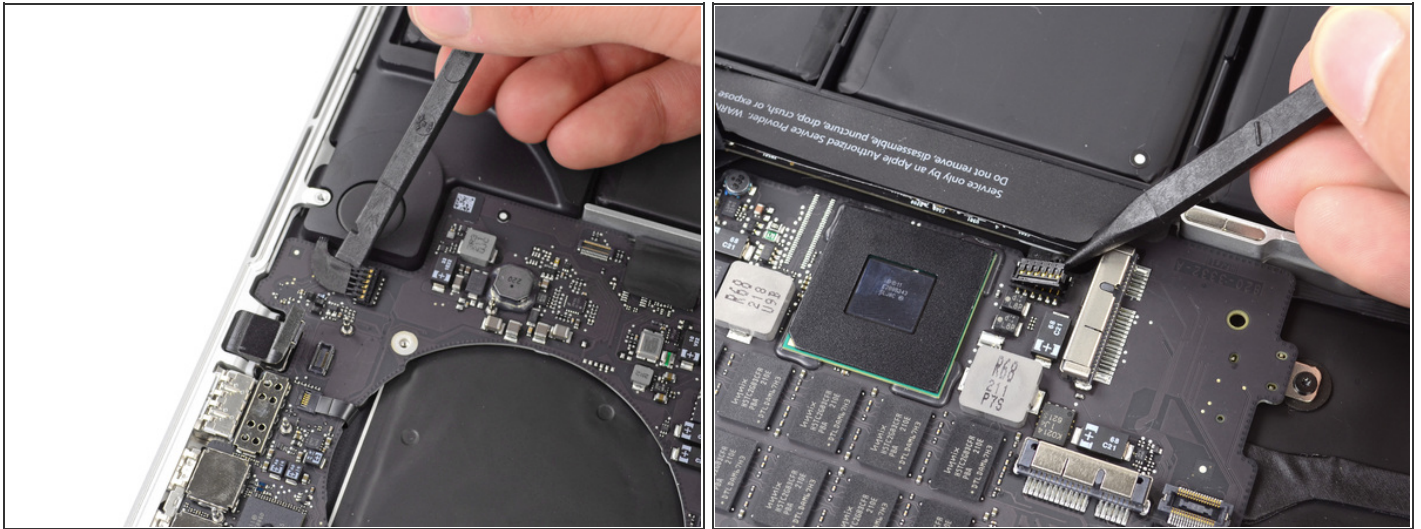
- Remove the two 3.1 mm T5 Torx screws securing the I/O board to the logic board.
- Carefully lift the I/O board and remove it from the lower case.

Step 24 — Logic Board Assembly



- Use the flat end of a spudger to pry the headphone jack connector up from its socket on the logic board.

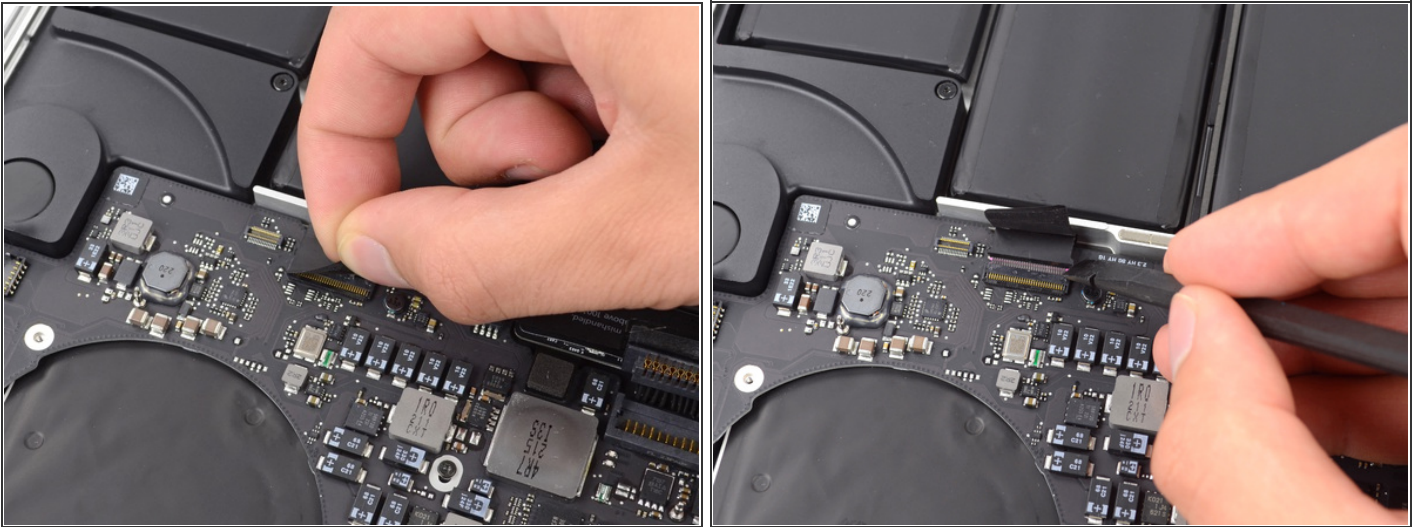
Step 25



- Use the flat end of a spudger to pry the left speaker connector up and out of its socket on the logic board.
- Use the tip of a spudger to pry the right speaker connector up and out of its socket on the logic board
- Be sure to pry on the cable head, and not on the socket itself. Prying on the socket may cause it to separate from the logic board.



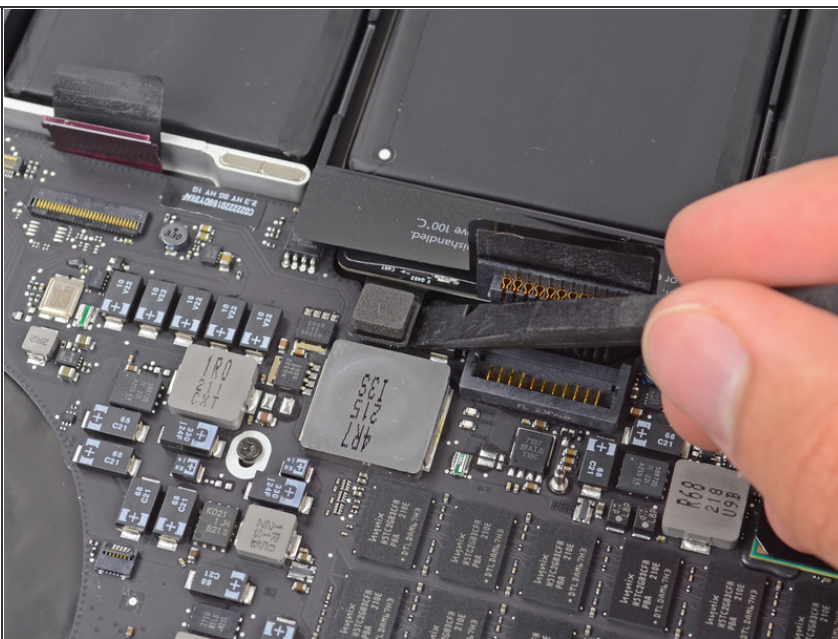
Step 26



- Use the flat end of a spudger to flip up the retaining flap on the keyboard ribbon cable ZIF socket.
- Be sure you are prying up on the hinged retaining flap, **not** the socket itself.
- Use the flat end of a spudger to pull the keyboard ribbon cable out of its socket.

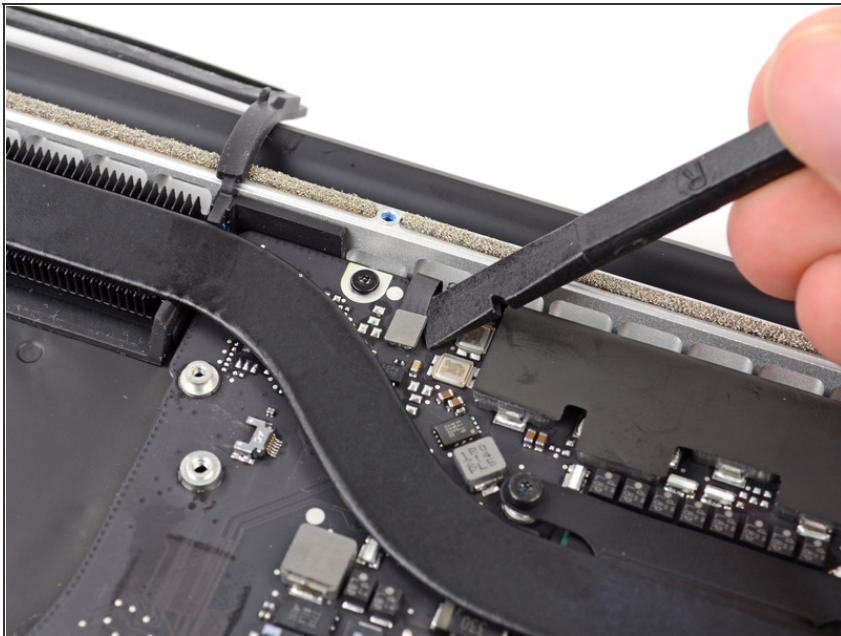


Step 27



- Use the flat end of a spudger to pry the battery indicator connector up from its socket on the logic board.


Step 28



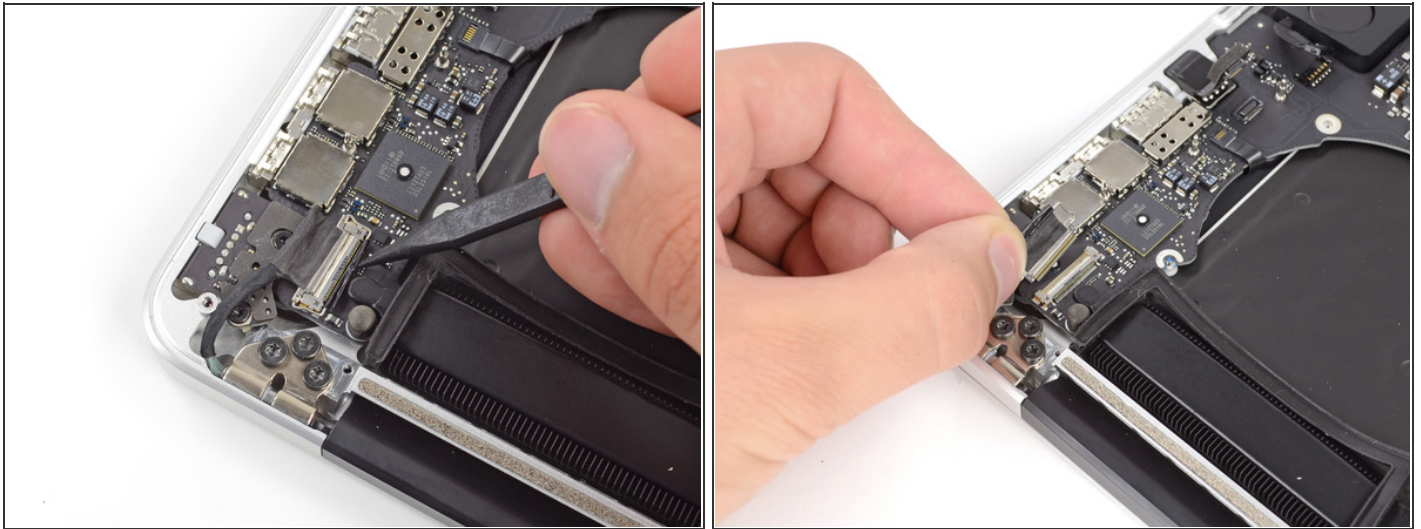
- Use the flat end of a spudger to pry the keyboard backlight connector up from its socket on the logic board.

Step 29



- Use the tip of a spudger or your fingernail to flip up the retaining flap on the microphone ribbon cable ZIF socket.
- Be sure you are prying up on the hinged retaining flap,  **not** the socket itself.
- Pull the microphone ribbon cable out of its socket.

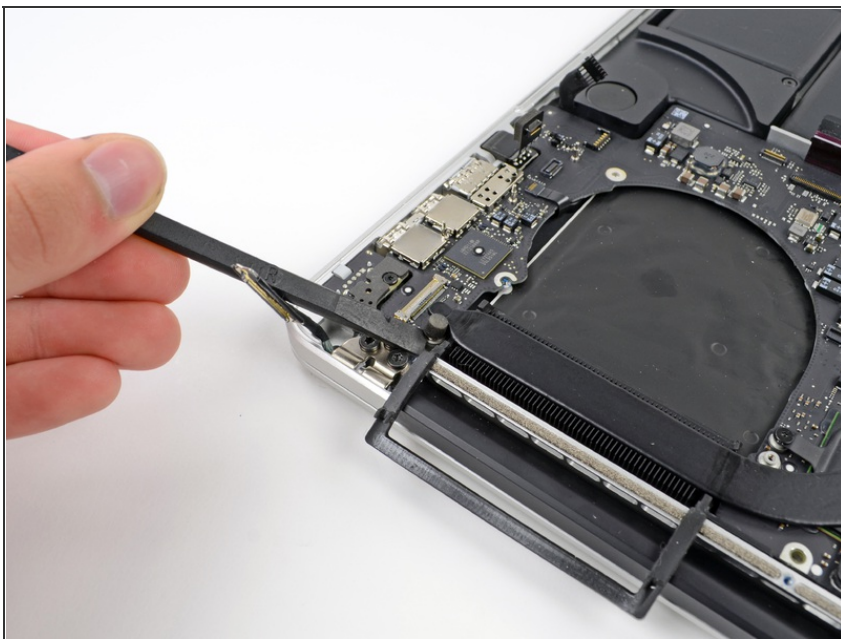
Step 30



- Use the tip of a spudger to pry the display data cable lock and rotate it toward the DC-In side of the computer.
- Pull the display data cable straight out of its socket on the logic board.
- Do not lift up on the display data cable, as its socket is very fragile. Pull the cable parallel to the face of the logic board.

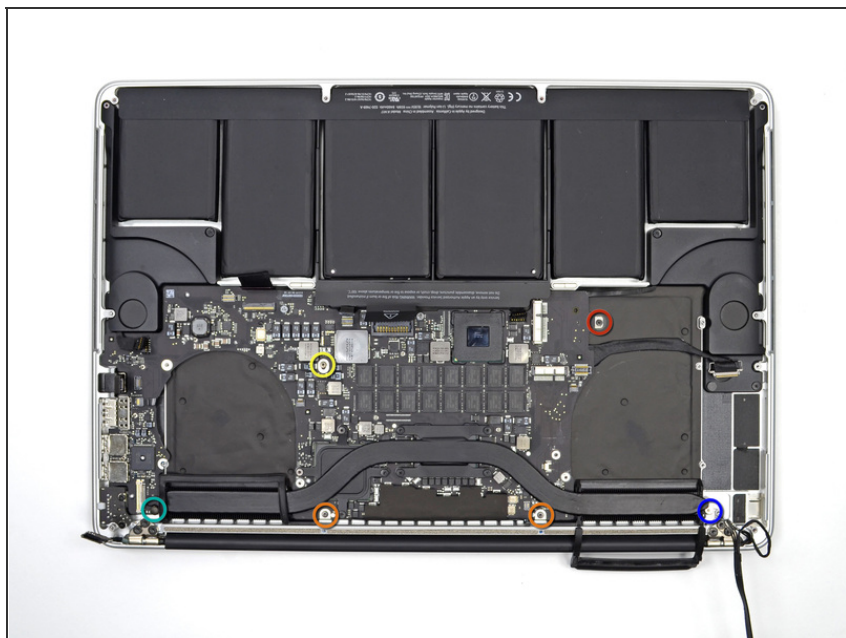


Step 31



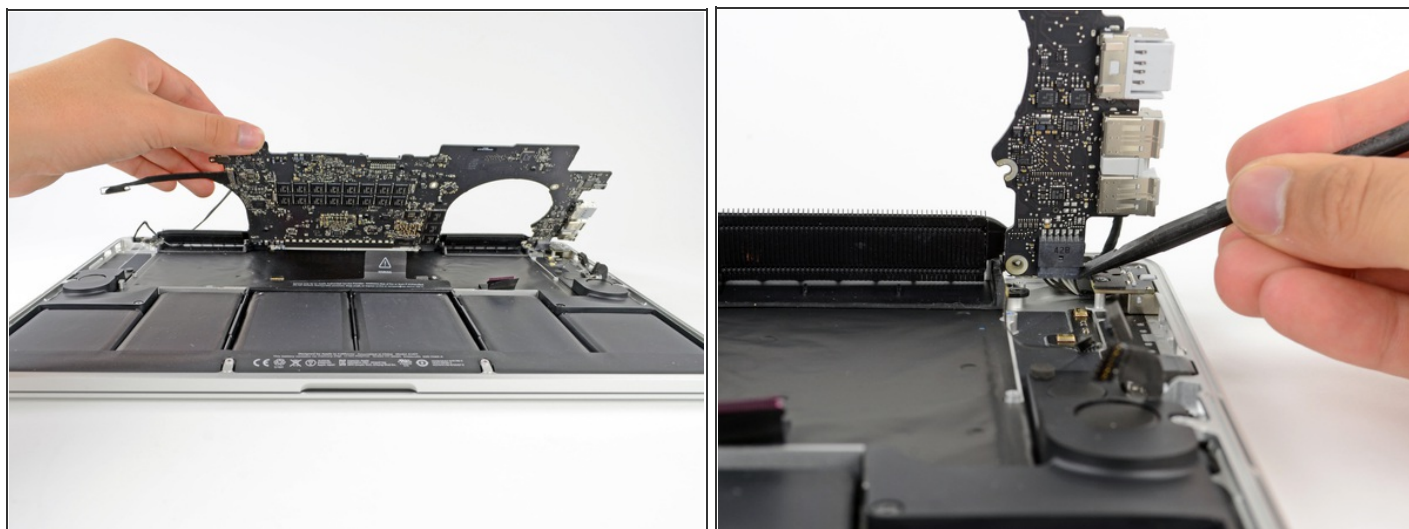
- Use the flat end of a spudger to carefully pry off the rubber screw cap on the raised screw head near to the MagSafe 2 connector.

Step 32



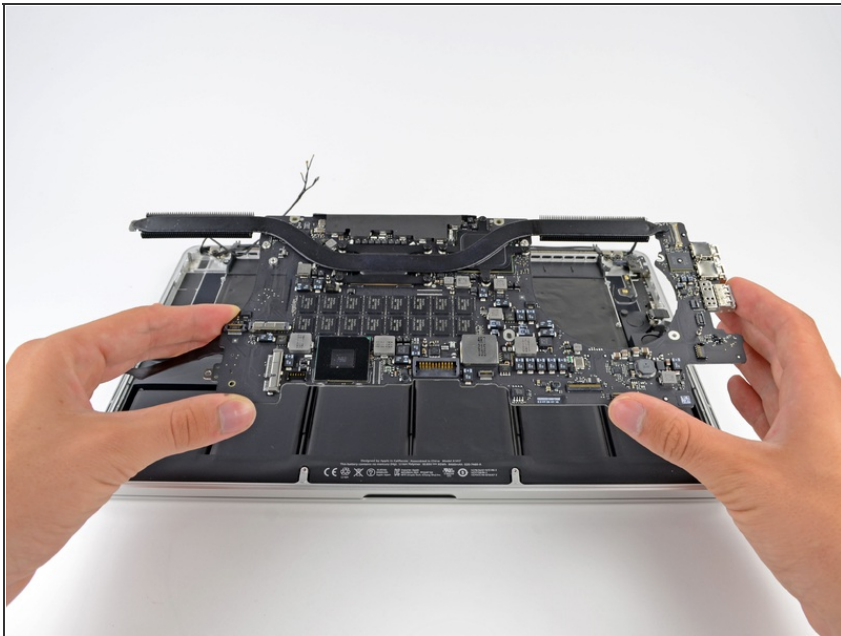
- Remove the following six screws securing the logic board to the upper case:
 - One 2.6 mm T5 Torx screw
 - Two 5.8 mm T5 Torx screws
 - One 3.8 mm T5 Torx screw
 - One 5.2 mm Raised Head T5 Torx screw
 - One 3.5 mm T5 Torx screw

Step 33



- Lifting from the side nearest the battery, rotate the logic board toward the top of the MacBook Pro.
- Using the flat end of a spudger, carefully push the MagSafe 2 connector out of its socket on the bottom of the logic board.

Step 34



- Remove the logic board assembly from the MacBook Pro.

Step 35 — Upper Case Assembly



- Remove the single 2.6 mm T5 Torx screw securing the left rubber hinge cover in place.
- Slide the hinge cover out of its bezel, then lift it up and out of the device.
- The screw in the right hinge cover should already have been removed.
- Slide the right cover out of its bezel, then lift it out of the device.



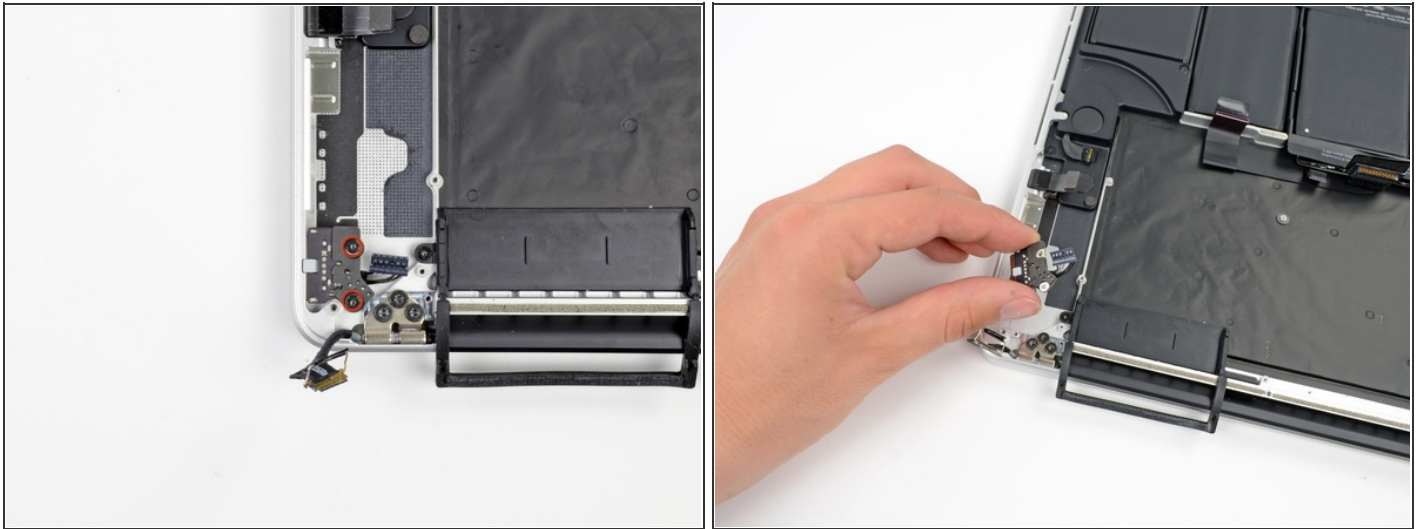
Step 36



- Insert the edge of a plastic opening tool underneath the upper microphone.
- Slide the blade of a plastic opening tool along the bottom of the upper microphone, releasing the adhesive.
- Be careful when releasing the adhesive holding the cable down, as these cables have been known to tear easily.
- In a similar manner, release the adhesive underneath the lower microphone.
- Lift the cable out of the device.



Step 37



- Remove the two 4.0 mm T5 Torx screws securing the MagSafe DC-In board to the upper case.
- Slide the MagSafe DC-In board towards the right free it from its recess within the upper case.
- Lift and remove the MagSafe DC-In board out of the upper case assembly.

Step 38



- Remove the two 3.6 mm T5 Torx screws securing the headphone jack to the upper case assembly.
- Slide the headphone jack away from the upper case.
- Lift and remove the headphone jack out from its recess in the upper case.

Step 39



- Remove the following three screws securing the left speaker to the upper case:
 - One 5.6 mm T5 Torx screw
 - One 6.9 mm T5 Torx screw
 - One 2.6 mm T5 Torx screw
- Lift the left speaker out of the upper case and set it aside.


Step 40



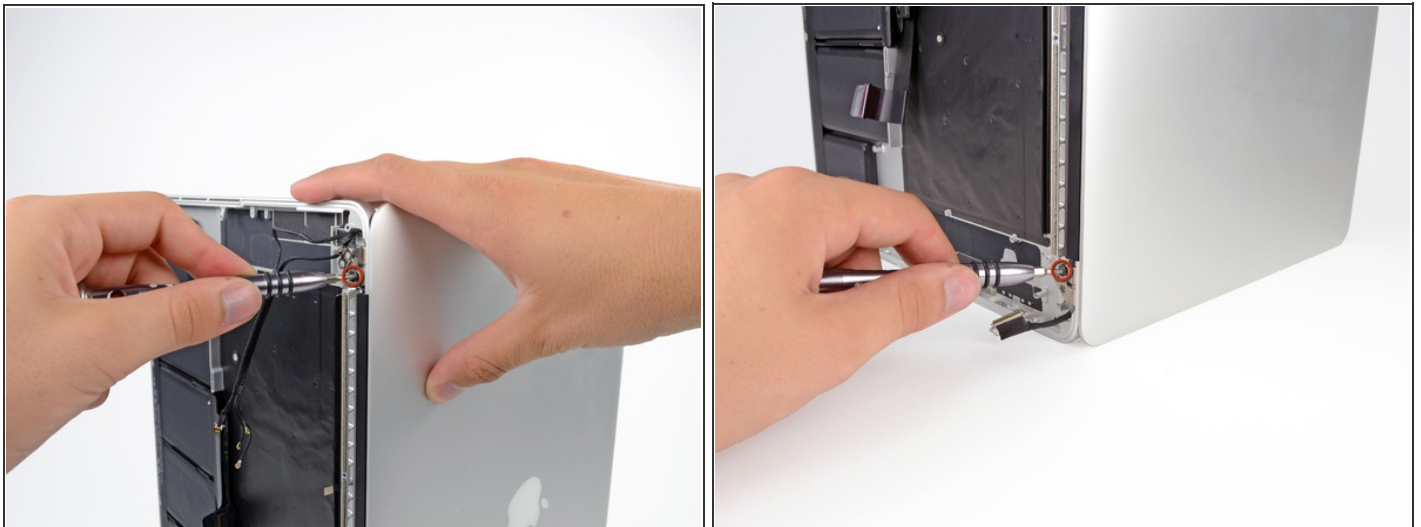
- Remove the following three screws securing the right speaker to the upper case:
 - One 5.6 mm T5 Torx screw
 - One 6.9 mm T5 Torx screw
 - One 2.6 mm T5 Torx screw
- Remove the right speaker from the MacBook Pro.




Step 41



- Remove four out of the six 5.3 mm T8 Torx screws securing the display to the upper case.
- We purposely have you leave two screws attaching the display to the upper case to aid in future steps. 

Step 42



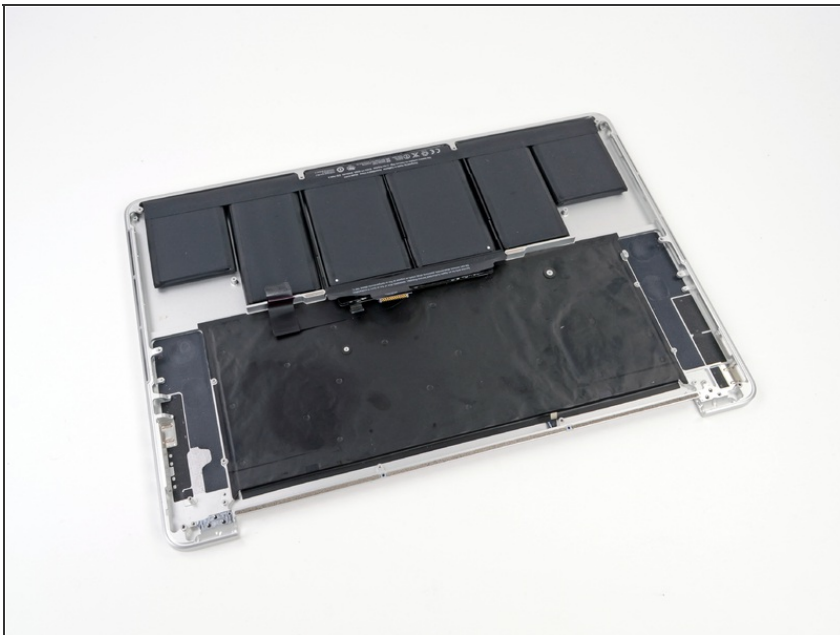
- Open the device between 90 and 100 degrees, then rest it on its side. 
- While supporting both halves of the device with one hand, unscrew the upper 5.3 mm T8 Torx screw.
- Repeat the same process for the identical bottom screw. 
- Be sure to hold the display and upper case together with one hand. Failure to do so may cause the freed display/upper case to fall, potentially damaging each component. 

Step 43



- Grip both halves of the device. Firmly put one hand on the top center of the upper case (left) and one in the same place on the display assembly (right).
- While holding the display assembly in place, slowly push forward on the upper case, releasing it from the display assembly.

Step 44



- Upper case remains.

To reassemble your device, follow these instructions in reverse order.

